

# ALUMINIUM CLASS A1 FIRE-RATED ADJUSTABLE SUB-FRAME SYSTEM



## PRODUCT DATA SHEET

info@alfrescofloors.com  
www.alfrescofloors.com

**AR-SYSTEM** is an aluminium external flooring system, comprising of a fully adjustable pedestal and joist sub-frame.

The patented pedestal has an in-built slope correction facility of up to 5% meaning that uneven groundworks or fall requirements are easily accommodated without the need for additional products.

Load spreader plates are available if required.

**AR-SYSTEM** has been developed specifically to meet the requirements for non-combustible materials on balconies and other outdoor spaces, delivered at a competitive price and short lead times.

**AR-SYSTEM** is suitable for a variety of surface materials including porcelain pavers, pressed concrete, and composite & aluminium deck boards. It comes with a selection of accessories that allow intricate subframes to be constructed as well as standard build ups.



A1 Fire-Rated



Non-Combustible



Quick Installation



Lightweight



Sustainability



Self Draining



UV Resistant



Chemical Resistant



Maintenance Free



Suitable For Use In  
Temperatures From  
-30°C to +90°C



**AR-SYSTEM SUB-FRAME TECHNICAL INFORMATION**

**Adjustment Range**

Build up range is **37mm - 114mm**, depending on combination of pedestal model and joist.

	Build up (mm) including joist	Joist (mm)	Pedestal	
High	87-114	60	AR-PED20-60	
	87-107	60	AR-PED20-51	
	77-93	60	AR-PED20-38	
Build up	63-90	35	AR-PED20-60	
	63-83	35	AR-PED20-51	
	62-75	20	AR-PED20-60	
	Low	53-66	20	AR-PED20-51
		50-68	35	AR-PED20-38
	37-53	20	AR-PED20-38	

Larger joists available - contact us for more information  
 Spreader plate adds 3mm to the height

**Tech Specs**

- Material: Aluminium **6063 T6**
- Minimum height: 20mm from floors to underside of joist
- Rated load capacity: 500kg
- Fire classification: **A1 (100% aluminium construction with zinc plated steel rod)**

**Pedestal & Joist Range**



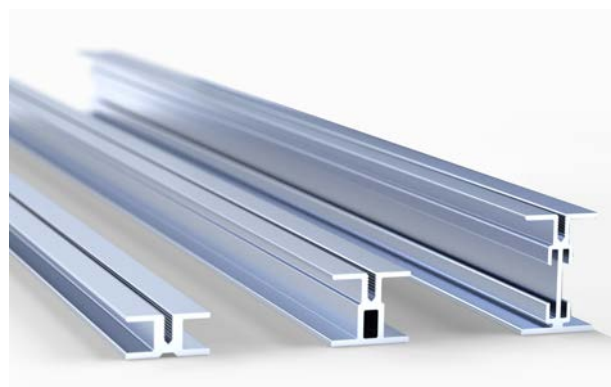
AR-PED20-38



AR-PED20-51



AR-PED20-60



JOISTS available in heights of 20, 35 & 60mm



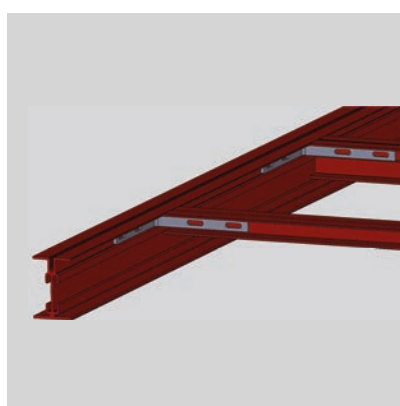
### AR-SYSTEM ACCESSORIES

#### Connectors

Allows the subframe to be constructed into standard or more intricate configurations



AR-BRACKET  
For 90° joist connection



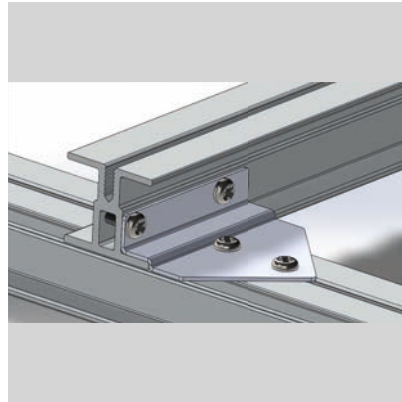
AR-BRACKET  
example



AR-JOINER  
For 180° joist connection



U-PLATE-150  
3mm Spreader Plate for use with  
insulation or waterproof membranes



AR-CONNECTOR  
For stacked joists

### SURFACE MATERIALS

#### Paving

**AR-SYSTEM** is compatible with all rectified paving products. For more information on how this is installed see our **AR-PAVE** data sheet.

#### Decking

Dependant on the type of decking, boards can be secured with hidden fixing clips or surface fixed to the joist. Alfresco Floors has its own range of aluminium deck boards. For more information see our **AR-DECK** data sheet.