



**AR-Pave** is a 100% aluminium paving support system comprising of adjustable pedestals, joists, spacer tabs, side stops and end stops. Load spreader plates are available if required.

The patented pedestal has an in-built slope correction facility of up to 5% meaning that uneven groundworks or fall requirements are easily accommodated without the need for additional products.

The spacer tab is delivered with two independent 3mm tabs that attach to the unit as required according to paver layout.

**Designed and manufactured in Britain**, AR-Pave has been developed specifically to meet the requirements for non-combustible materials on balconies and other outdoor spaces, delivered at a competitive price and short lead times.



**SUB-FRAME TECHNICAL INFORMATION**

Slope Correction of up to 5% possible with all pedestal models.

Build up range is 31mm - 146mm\*, excluding pavers (dependent on pedestal and joist combination).

\*Please contact us for height requirements above 146mm

	Build up including joist, spacer tab, end & side stops	Joist	Pedestal
High	128mm-165mm	120mm	PED50
	105mm-128mm	100mm	PED50
Build up	79mm-105mm	70mm	PED50
	59mm-78mm	50mm	PED50
	41mm-58mm	20mm	PED20XR
	28mm-40mm	20mm	PED20
Low			

NB - Load Spreader plates will add 3mm to the above adjustment ranges.



A1 Fire-Rated



Non-Combustible



Quick Installation



Lightweight



Temperatures Resistant



Maintenance Free



UV Resistant



Chemical Resistant



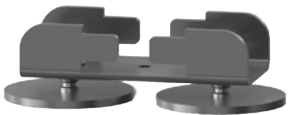
Self Draining



Tech Specs

Material	Aluminium 5251 H22
Minimum height	31mm
Rated load capacity	>500kg
Fire classification	<b>A1 (100% aluminium construction)</b>

Pedestal & Joist Range



**PED20**  
For use with 20mm joist  
Adjustable range 12mm

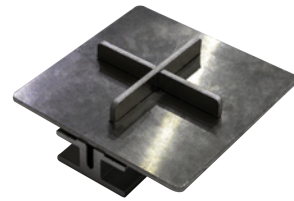


**PED20XR**  
For use with 20mm joist  
Adjustable range 22mm



**PED50**  
For use with 50, 70, 100 &  
120mm joists Adjustable  
range 35mm

**SPACER TAB**  
3mm width



**JOISTS**  
available in heights of  
20, 50, 70, 100 & 120mm

